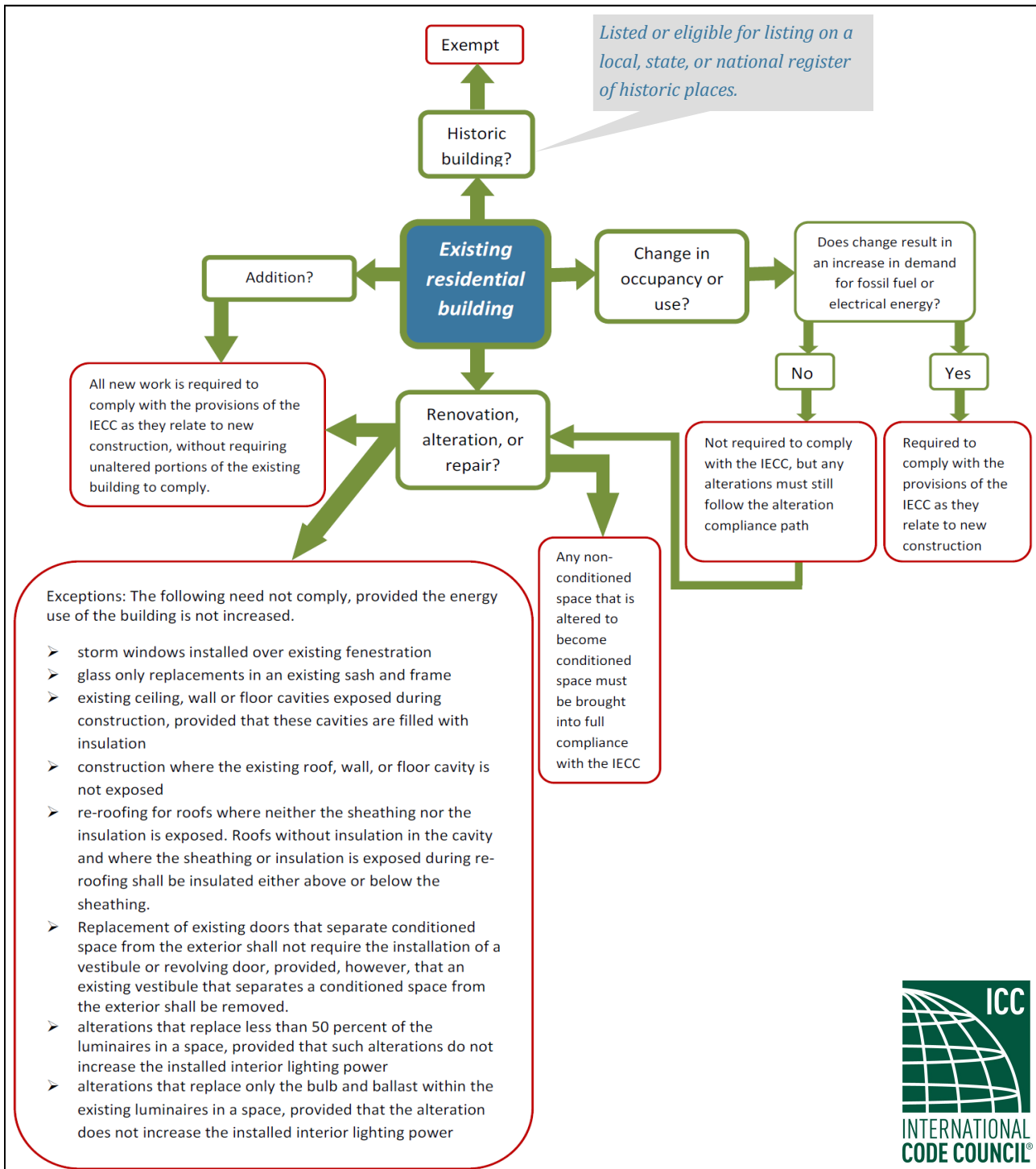
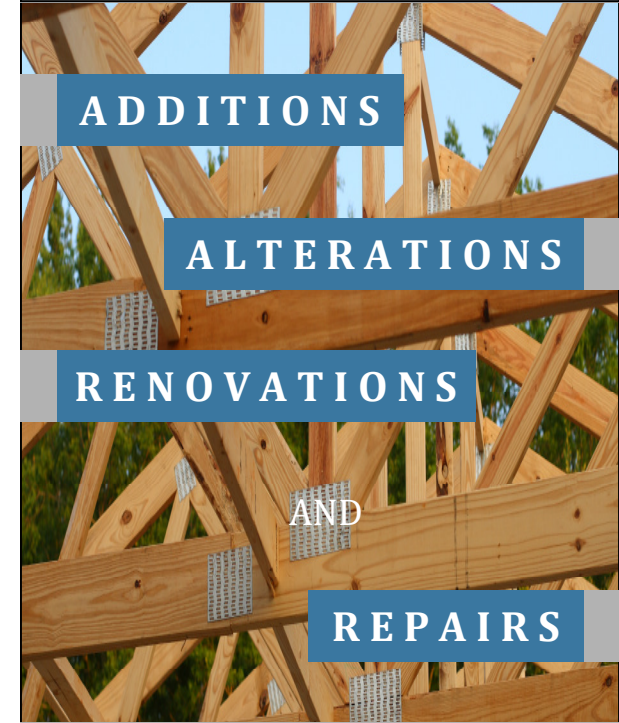


# DOES MY PROJECT HAVE TO COMPLY?



## The International Energy Conservation Code as applied to:



**ADDITIONS**

**ALTERATIONS**

**RENOVATIONS**

AND

**REPAIRS**

## RESIDENTIAL BUILDINGS

Developed by:



[www.imt.org](http://www.imt.org)

# Definitions

**Alteration** is any construction or renovation to an existing structure, other than repair or addition, that requires a permit. Also a change in a mechanical system that involves an extension, addition, or change to the arrangement, type, or purpose of the original installation and that requires a permit.

**Repair** is the reconstruction or renewal of any part of an existing building.

**Addition** is the extension or increase in the conditioned space, floor area, or height of a building or structure.

**Conditioned Space** is an area or space within a building being heated or cooled, containing uninsulated ducts, or with a fixed opening directly into an adjacent conditioned space.

**Residential Building** in the IECC includes single- and multifamily buildings (R-2, R-3 and R-4) three stories or less in height above grade.

**Building Thermal Envelope** is the basement walls, exterior walls, floor, roof, and any other building elements that enclose conditioned space. This boundary also includes the boundary between conditioned space and any exempt or unconditioned space.

# Requirements



Photo credit: Landis Construction



Photo credit: Landis Construction

Any attic or other non-conditioned space that is altered to become conditioned space shall be brought into full compliance with the IECC.<sup>1</sup>

 A composite image showing a person installing a window and a table of performance ratings.
 

World's Best Window Co. Millennium 2000™ Vinyl Clad Wood Frame Double-Pane, Argon Fill, Low-E Product Type: Vertical Slider	
<b>ENERGY PERFORMANCE RATINGS</b>	
U-Factor (U.S./F)	Solar Heat Gain Coefficient
<b>0.35</b>	<b>0.32</b>
<b>ADDITIONAL PERFORMANCE RATINGS</b>	
Visible Transmittance	Air Leakage (U.S./F)
<b>0.51</b>	<b>0.2</b>
Condensation Resistance	
<b>51</b>	<b>—</b>

When replacing a window assembly, it must comply with the IECC requirements (U-factor, solar heat gain, and air leakage). When only replacing the glass in an existing sash and frame, the glass is not required to comply with the IECC.



Photo credit: U.S. Dept. of Energy

The replacement of an HVAC unit is required to comply with the IECC. This would include the sealing of the air handler, filter boxes, plenums, and any connecting ductwork as well as equipment sizing.



Photo credit: Landis Construction



Photo credit: Bryn Pinzgauer

If a cavity within the building thermal envelope is exposed and contains no insulation, or the insulation does not completely fill the cavity, the exposed cavity is required to be “filled” with insulation. Roofs without insulation in the cavity and where the sheathing or insulation is exposed during re-roofing shall be insulated either above or below the sheathing.

All portions of an addition shall comply with the applicable provisions of the IECC without requiring unaltered portions of the existing home to comply.



Photo credit: Landis Construction

## Project Checklist

- Insulation
- Air Sealing
- Fenestration (windows/doors)
- Ducts
- Heating/Cooling Equipment
- Lighting

<sup>1</sup>IECC is the International Energy Conservation Code and is published by the International Code Council (ICC). For more information about the IECC or to purchase a copy, visit [www.iccsafe.org](http://www.iccsafe.org).

\*This brochure is NOT an ICC publication, but has been reviewed by ICC technical staff for accuracy. Specific code requirements and the interpretation thereof are the sole authority of the adopting jurisdiction.

Specific questions regarding your project should be directed to your local code official. Questions about this brochure can be directed to Ryan Meres: [ryan@imt.org](mailto:ryan@imt.org)